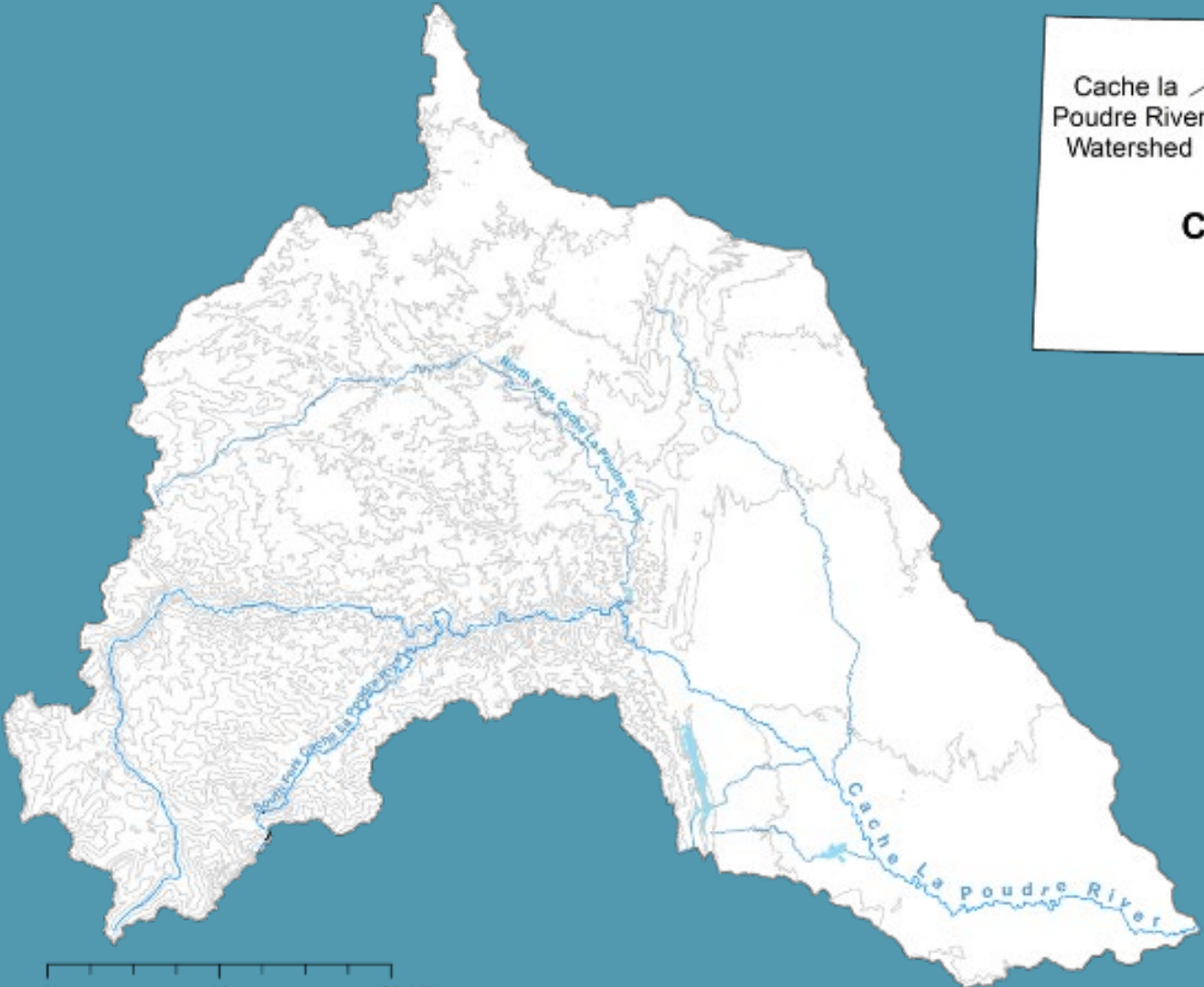
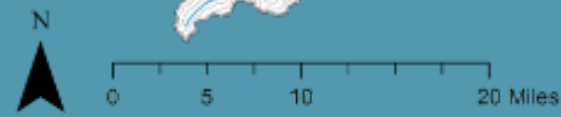




Cameron Peak Fire Recovery & Restoration

Megan Maiolo-Heath, Marketing Manager,
Coalition for the Poudre River Watershed

July 27, 2022



OUR MISSION: To improve & maintain the ecological health of the Poudre River Watershed through community collaboration.

Our History



Debris flows after the High Park Fire

- 2012 - High Park Restoration Coalition (HPRC)
- May 2013 - Formalized as CPRW – 501c3 nonprofit

Current Board:

- City of Fort Collins Utilities
- City of Greeley Water & Sewer
- Larimer County
- Rocky Mountain Flycasters/ Trout Unlimited
- Local Landowner
- Carestream Health
- Mighty Arrow Foundation
- Retired USFS
- Community members

CPRW Programs



Upper Poudre Watershed Resilience Plan Final

Milton Seaman Reservoir

Resilient Pine Cones

Upper Cache La Poudre River

January 2017

Prepared for Coalition for the Poudre River Watershed

Prepared by JW Assoc

Lower Poudre River Flood Recovery and Resilience Master Plan

Prepared for:
The Coalition for the Poudre River Watershed

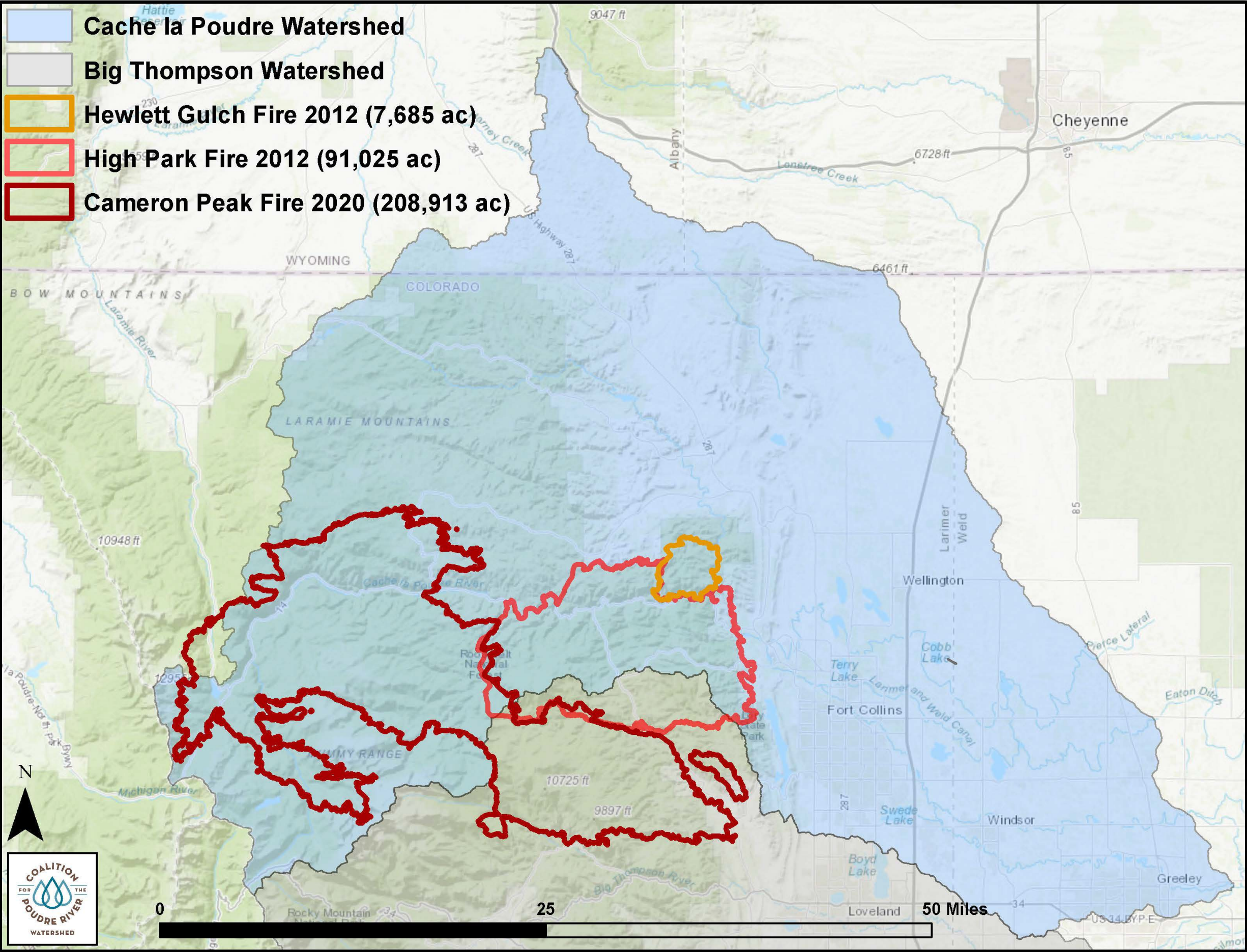
Prepared by:
Lynker Technologies Otak AlpineEco LVBrown Studio

December 2017

When our watersheds are more resilient, they are better prepared to rebound following future floods and fires.



Wildfire in the Watershed



Cameron Peak Fire IMPACTS

- 208,913 acres burned
- 25-mile-long perimeter
- 1,050 stream miles
- 124 trail miles
- 41,700 acres of Wilderness burned
- 32 miles of Wild and Scenic corridor burned
- Three watersheds - Poudre, Big Thompson & Laramie
- Five reservoirs
- 16 mountain communities
- 492 structures destroyed



Wildfire Response Phases & Stakeholders Involved

Fire Response & Communication	Recovery Planning	Declarations / Collaboration	Fundraising	Communications with Public
Monitoring	Project Prioritization	Land Restoration & Public Assistance	Future Planning & Mitigation	

Long-Term Watershed Impacts



**ALTERED WATERSHED
PROCESSES**



**EXCESS SEDIMENT &
NUTRIENTS**



**DEBRIS FLOWS, FLASH
FLOODS, WASHED OUT
ROADS, WATER QUALITY
ISSUES**

Project Prioritization Factors

Post-Fire Sediment Inputs

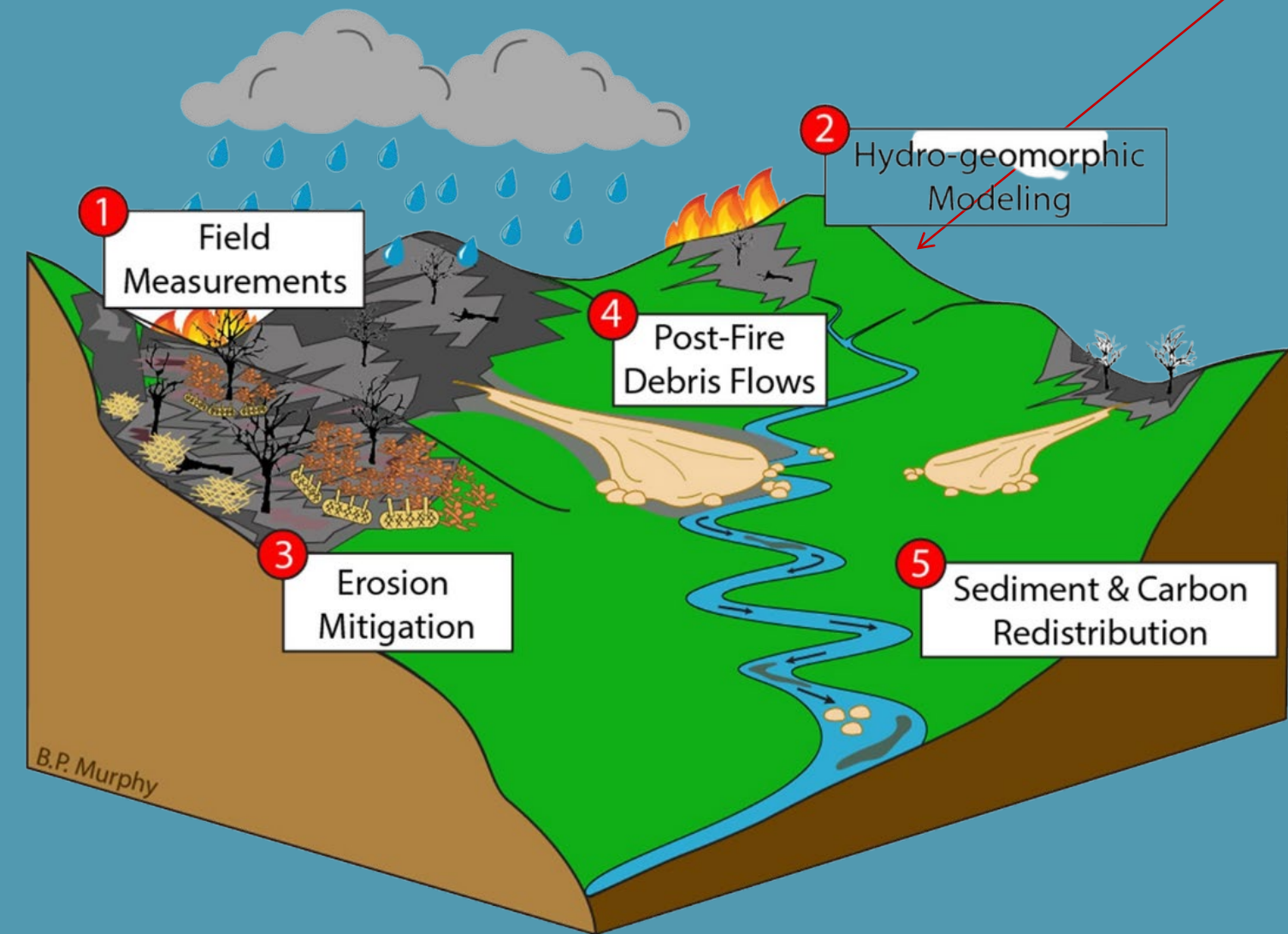
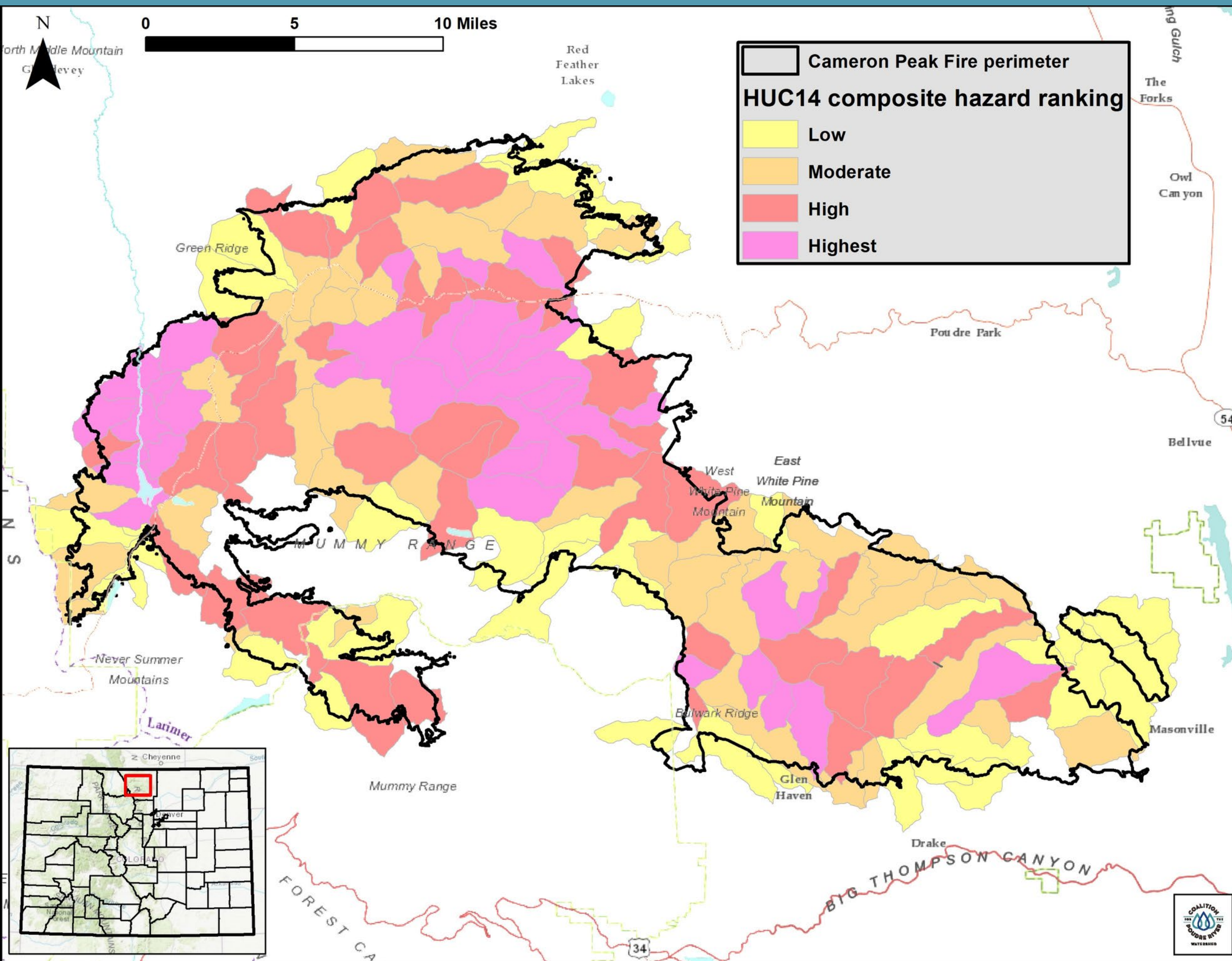


Photo Credits: USGS, Ayres Associates



- SOIL BURN SEVERITY, DEBRIS FLOW, SEDIMENT YIELD, ROAD DENSITY, POST FIRE HYDROLOGY
- RANKED LOW TO HIGHEST FOR COMPOSITE HAZARD
- FOCUS ATTENTION ON HIGH TO HIGHEST WATERSHEDS

CPF RESTORATION PROGRAM



Aerial Mulching



Point-Mitigation

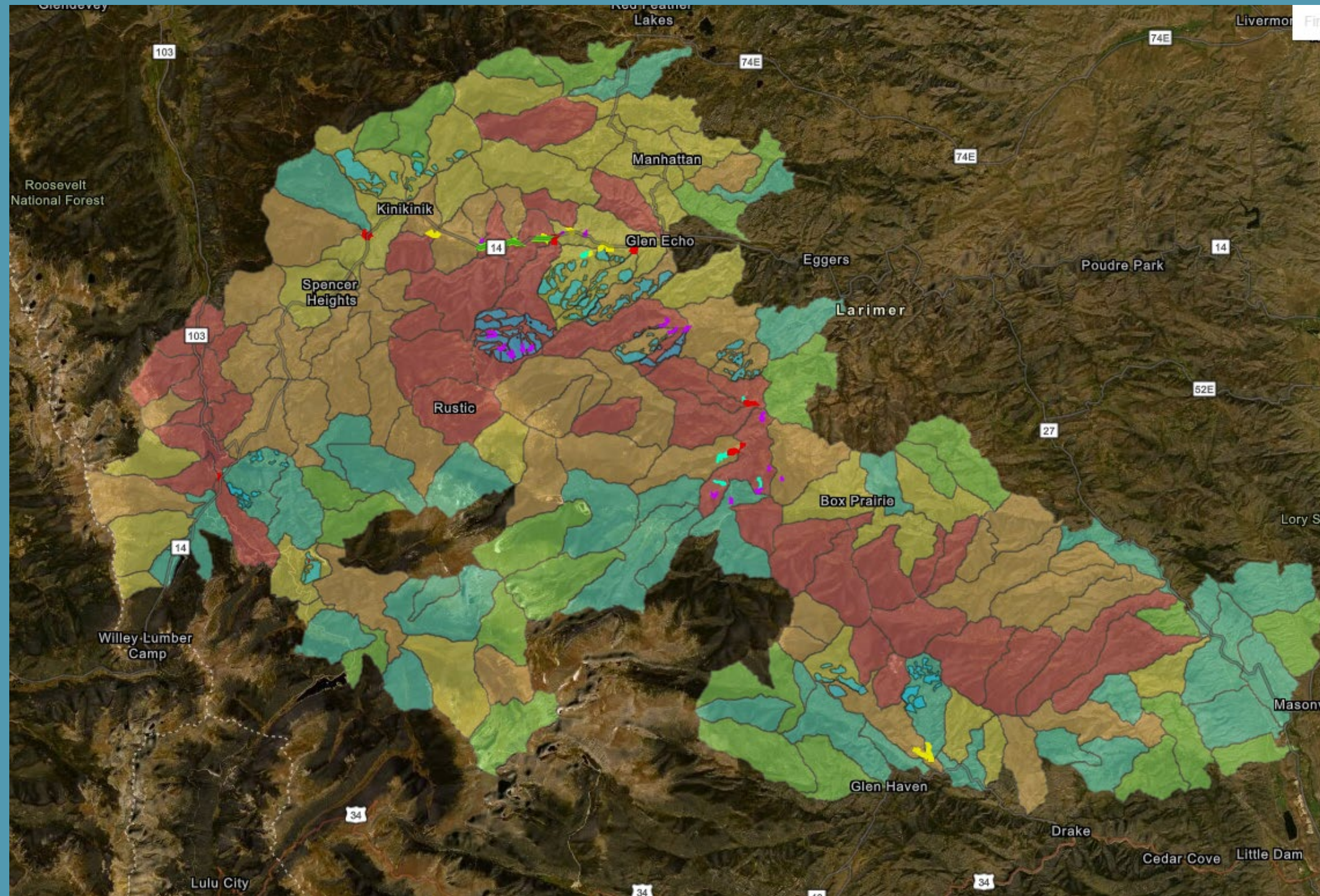


Reforestation

Full-time Post-Fire Program Manager – Shayna Jones, shayna@poudrewatershed.org



CPF POST-FIRE PROJECTS



[Online interactive project map](#)

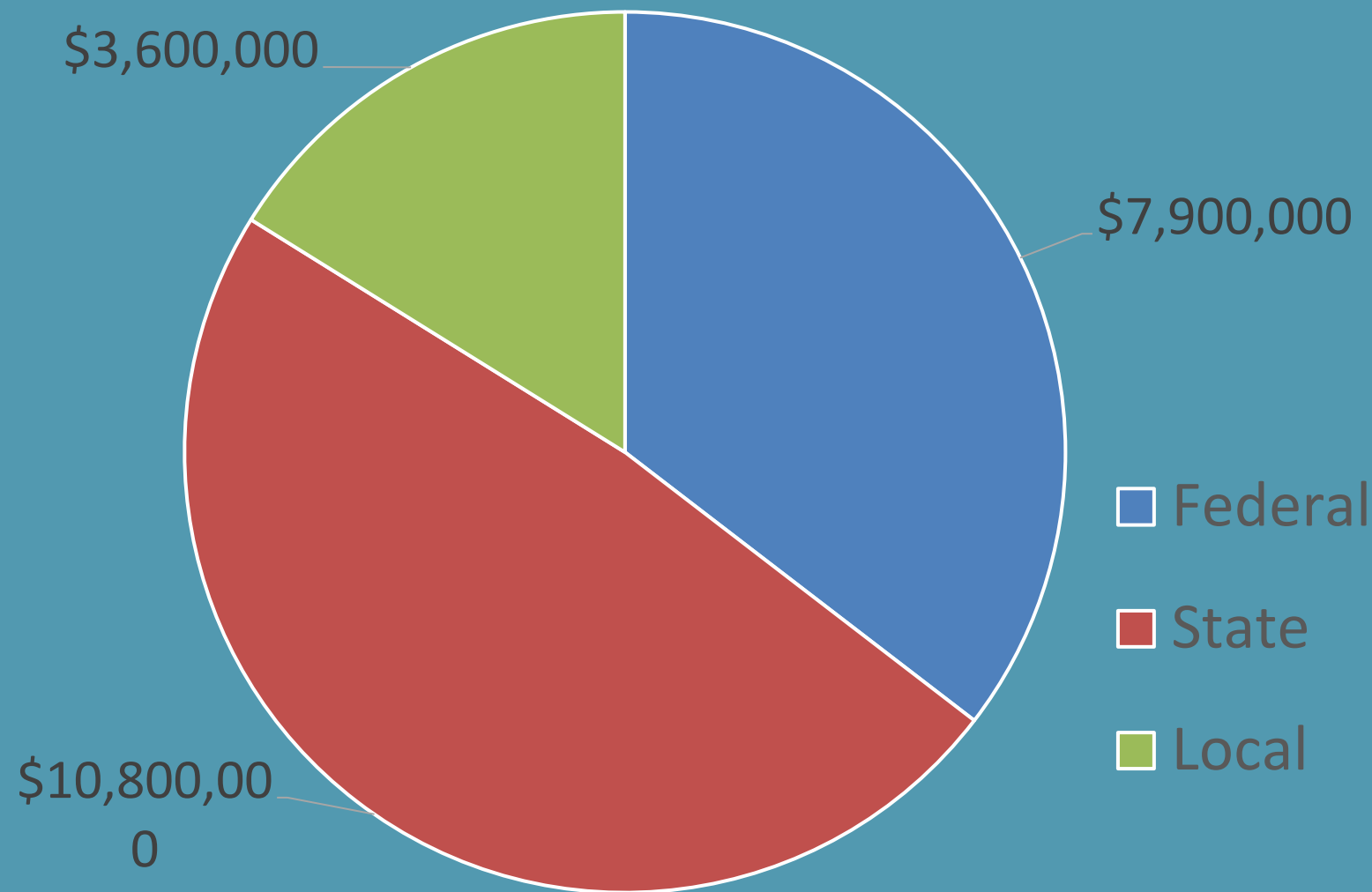


POST FIRE PROGRAMS & FUNDING

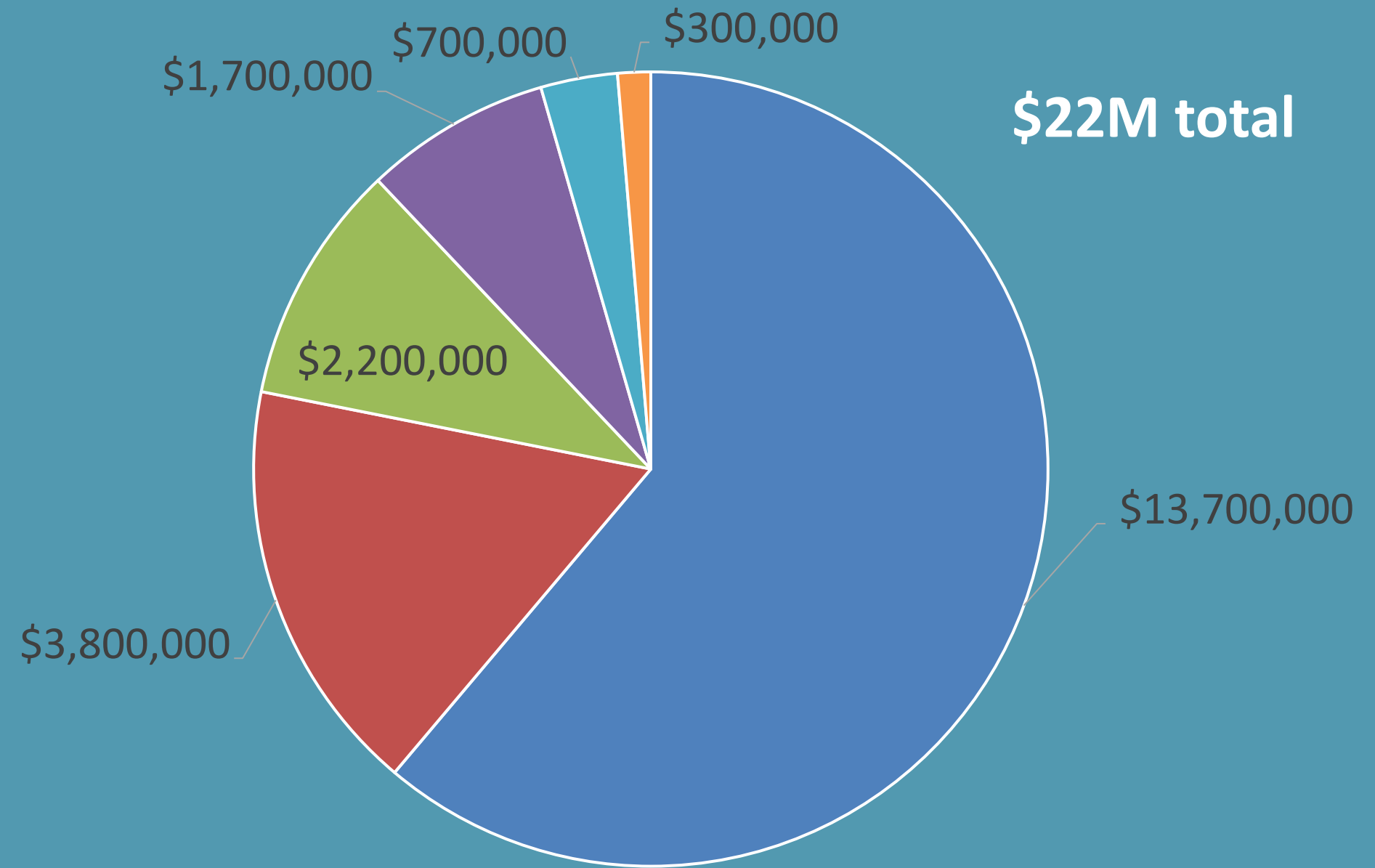
Program	Key Partners	Goals	Funding Source
Aerial Mulching	City of Greeley & City of Fort Collins, Watershed Groups, USFS	<ul style="list-style-type: none"> •Limit Hillslope Erosion 	CWCB, EWP, USFS, Local Govts
Point Mitigation (EWP)	City of Greeley, City of Fort Collins, Larimer County	<ul style="list-style-type: none"> •Protect VARs •Enhance Deposition, Limit Stream Incision •Improve Undersized Culverts & Crossings on Cty Rds 	Local Govts; NRCS EWP
Additional Point Mitigation & Reforestation	Watershed Groups – CPRW & BTWC	<ul style="list-style-type: none"> •Improve Water Quality •Improve Riparian Recovery •Reforestation 	CDPHE & CWCB; Community Foundation; Other Private Sources
Planning	Municipalities, USFS, Watershed Groups	<ul style="list-style-type: none"> •All the above! 	USFS, EWP, CWCB, Local Gov'ts
Research & Monitoring	CSU Researchers; USFS RMRS	<ul style="list-style-type: none"> •Study impact of fire and treatments 	CWCB; CSU;

POST FIRE 2021 PROGRAM SPENDING

2021 Funding Sources



\$22M total



2021 Program Spending

- Aerial Mulching
- Point Mitigation Construction
- Additional Mitigation

AERIAL MULCH OVERVIEW



Largest aerial wood mulch operation in the United States.



2021 – 5,800+ acres mulched - \$13.7M spent

2022 – 3,000+ acres planned - \$9.7M secured in funding



POINT MITIGATION TREATMENTS



REFORESTATION



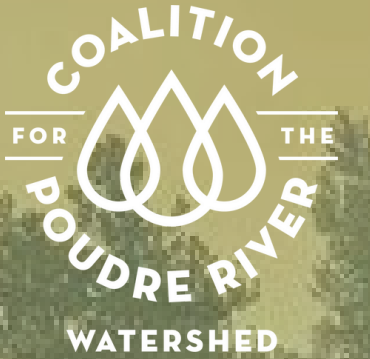
- Mostly ponderosa pine – 135 trees/acre – all locally sourced seed
- “Climate-Smart Planting”
- Planting in moderate/high burn severity areas and double burned areas (High Park & Cameron Peak)
- **2021 – approx. 6,000 trees planted**
- **2022 – approx. 13,000 trees will be planted**



LARIMER COUNTY
**CONSERVATION
CORPS**



Wildfire Mitigation & Forest Health



W.O.L.F. Sanctuary Wildfire Mitigation Project

Hand thinning, pile burning

Total acres = 38



Swanson Ranch Forest Restoration

Mechanical whole tree removal

Total acres = 200



Elkhorn Creek Forest Health Initiative

Thinning, Rx fire

Total acres = 1,100+

Northern Colorado Fireshed Collaborative

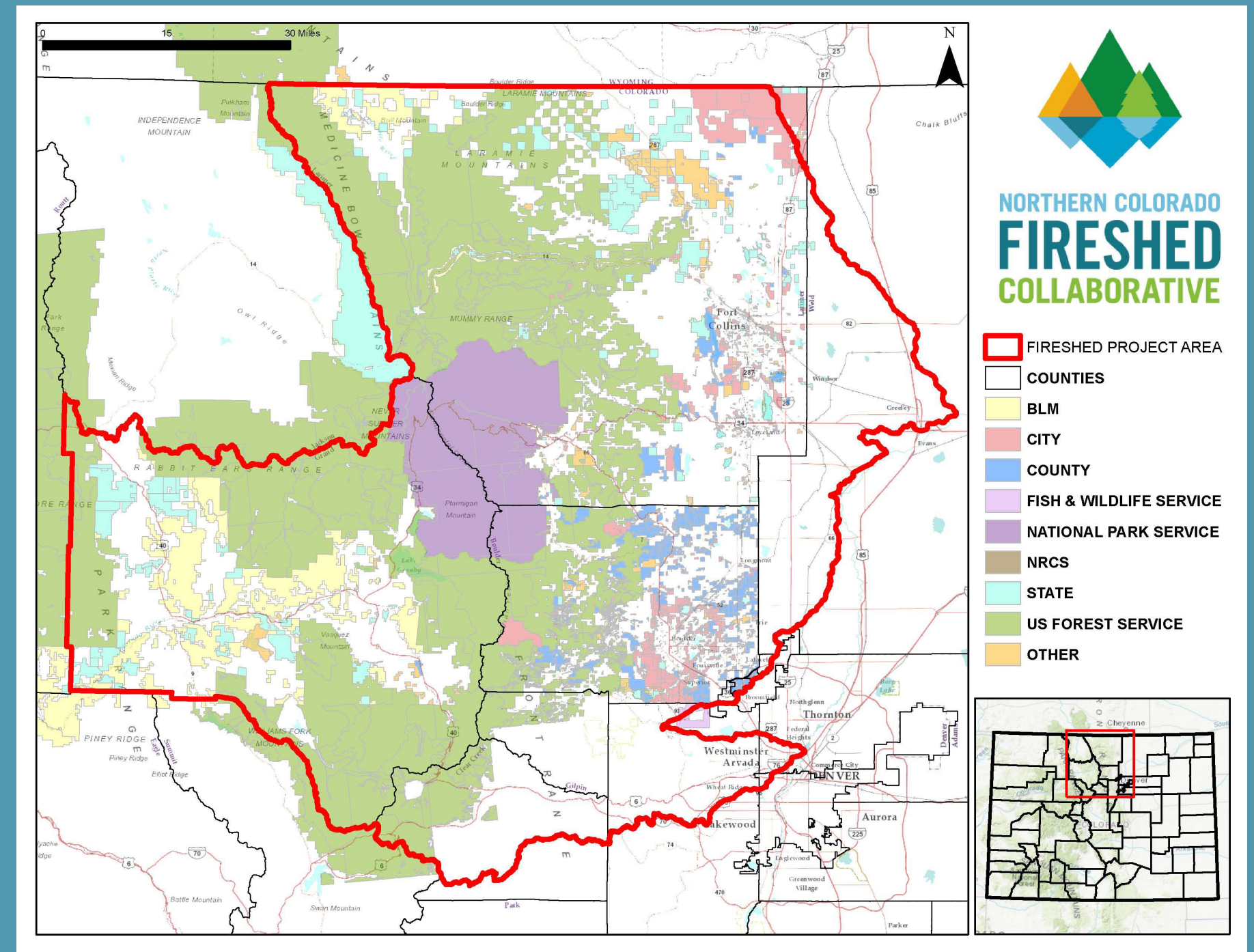


NORTHERN COLORADO FIRESHED COLLABORATIVE

Mission

To create resilient landscapes by facilitating an increase in the pace and scale of not only mechanical fuel reduction methods but also prescribed fires and strategically managed wildland fires across jurisdictional boundaries.

Learn more at www.nocofireshed.org



The Northern Colorado Fireshed Collaborative (NCFC) spans the Front Range from the Wyoming border through Clear Creek County.

QUESTIONS?

Learn more at

www.poudrewatershed.org



@poudrewatershed