

ABOUT THE BASIN LOCATION

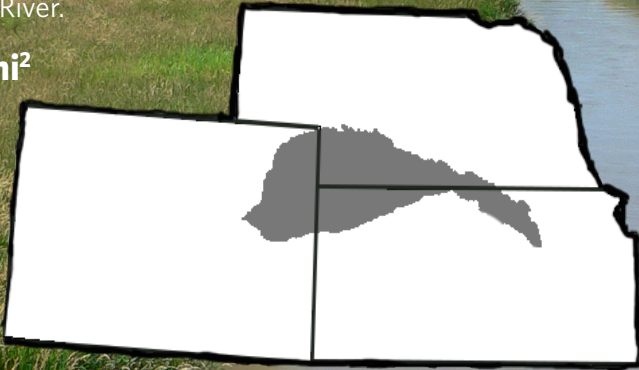
The Republican River Basin is located in Kansas, Nebraska, and Colorado. In Colorado the basin rests on the Northeastern High Plains. The Republican River Basin in Colorado has three tributaries including the North Fork and the South Fork of the Republican River and the Arikaree River.

7,760 mi²

of the Republican River Basin is in Colorado

31%

of the Republican River Basin is in Colorado



92,498

People live in the Republican River Basin



The basin consists mainly of grassland and cultivated land.

REPUBLICAN RIVER BASIN

An informational guide to Colorado's Republican River Basin

REPUBLICAN RIVER BASIN CHALLENGES

The Republican River Basin will face some key water management issues over the next 40 years, including:

1. Continued Republican River Compact compliance.
2. Projected depletions to the Ogallala Aquifer are anticipated to continue to reduce the amount of readily available water supplies for the agricultural economy in the Basin
3. Continued detailed coordination and communication between multiple water rights and administrative authorities

THE REPUBLICAN RIVER COMPACT

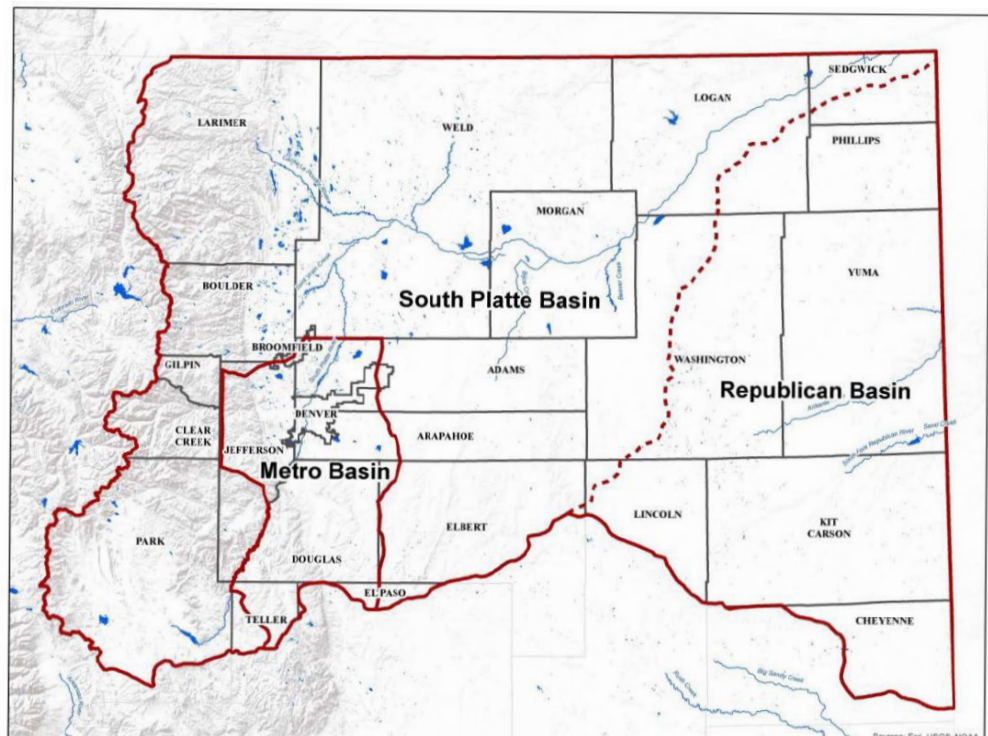
The Republican River Compact of 1942 divides the waters of the Republican River Basin between Colorado, Nebraska and Kansas. Colorado was allocated 54,100 acre-feet per year, which is further allocated as follows:

- North Fork of the Republican River drainage basin 10,000 acre-feet
- Arikaree River drainage basin 15,400 acre-feet
- South Fork of the Republican River drainage basin 25,400 acre-feet
- Beaver Creek drainage basin 3,300 acre-feet

In addition, Colorado is allocated the entire water supply of the Frenchman Creek and Red Willow Creek drainage basins in Colorado.

The Republican River Water Conservation District (RRWCD) was created by the Colorado Legislature in 2004 to assist Colorado in its efforts to reach compliance with the Republican River Compact. The RRWCD has a 15 member Board representing the counties and groundwater management districts within the Basin.

WHERE IS THE REPUBLICAN RIVER BASIN IN COLORADO?



REPUBLICAN RIVER BASIN FEATURES

ABOUT THE OGALLALA AQUIFER

The Ogallala aquifer, which rests under the Republican River Basin, is one of the largest water bodies in the United States and extends from South Dakota to Texas.

The aquifer does not benefit from snowmelt on the eastern slopes. The primary source of recharge for the Ogallala Aquifer is infiltration of precipitation, but this process is limited by the low precipitation and high evaporation rates that are common to the eastern plains.

The Republican River Water Conservation District promotes conservation through voluntary participation. By utilizing federal programs, the RRWCD has brought in millions of federal dollars to offer financial incentives to producers who voluntarily retire irrigation water rights to reduce consumptive use to the stream flows.

The RRWCD also negotiates the purchase of surface water rights in the Republican River Basin in an effort to enhance the virgin water supplies to the three tributaries.

The voluntary retirement of large capacity wells and attaining surface water rights for in-stream flow reinforces the District's efforts to conserve the Ogallala Aquifer for future generations.



Photo courtesy of Fishhawk

AGRICULTURE IN THE REPUBLICAN RIVER BASIN

Agriculture drives the economy in the Republican River basin. The counties inside the Republican River Basin are agricultural leaders in Colorado. Yuma, Kit Carson, Phillips, and Washington counties are ranked in the top ten agricultural producing counties in the state according to the 2012 United States Department of Agriculture agricultural census.

Total Agricultural Sales by County

County	Total Sales
Weld	1,860,718,000
Yuma	1,150,344,000
Morgan	615,319,000
Logan	566,903,000
Kit Carson	499,775,000
Washington	220,713,000
Phillips	208,006,000
Larimer	128,647,000
Adams	116,464,000
Sedgwick	101,263,000
Cheyenne	87,084,000

*Not Listed: Denver County – withheld from study

The Republican River Basin currently holds 550,000 irrigated agricultural acres in Colorado.

To preserve the agriculture based economy of this area, producers take advantage of the newest technology. Land owner organizations encourage innovative water conservation methods and practices. Focus groups promote communication and education in conserving the life-blood of these rural communities.

Experts expect the amount of agricultural acres in the Republican River Basin to decrease by up to 20% by 2050 if current agricultural trends continue.