

# Implementing the BIP:

## Roundtable Selected Projects

June 7, 2022

# The BIP was a lot of work!



The cover of the South Platte Basin Implementation Plan, Volume 1, January 2022. The background is a teal color. In the top right corner, there is a collage of images including a city skyline, a tractor in a field, a river with kayakers, a road, and a herd of bison. The text on the cover reads: "VOLUME 1 • JANUARY 2022" in a small white font, followed by "SOUTH PLATTE" in a large, bold, white font, and "Basin Implementation Plan" in a slightly smaller white font below it.

# There's a lot in it!

> 120 Measurable  
Outcomes!

The basin has **12 GOALS**  
centered around:

- ✓ Encouraging project implementation
- ✓ Maximizing development of native supplies while supporting cooperative outside supply options
- ✓ Maintaining and improving municipal and industrial conservation and efficiency
- ✓ Maintaining and promoting reuse
- ✓ Protecting irrigated agriculture
- ✓ Protecting and enhancing watershed function and environmental and recreational attributes
- ✓ Using scenario planning to manage uncertainty of future water needs
- ✓ Broadening communications, outreach, and education
- ✓ Improving efficiency and effectiveness of water project permitting



# South Platte BIP Next Steps

- So, how do we put it to work?
- Who's responsible for implementing it?
- How do we know we are making progress?

# What if...?

**...the Roundtables selected, scoped, and implemented projects, based on the BIP Goals and Measurable Outcomes?**

Projects such as:

- Studies or research with broad application in the basin

- Monitor projects, efficiency gains, etc.

- Pilot new technologies or techniques

- Catalog best practices

- PEPO projects

- NOT water supply projects for a specific provider

Criteria:

- Specific, relatively simple scopes

- Accomplished in ~1 to 2 years

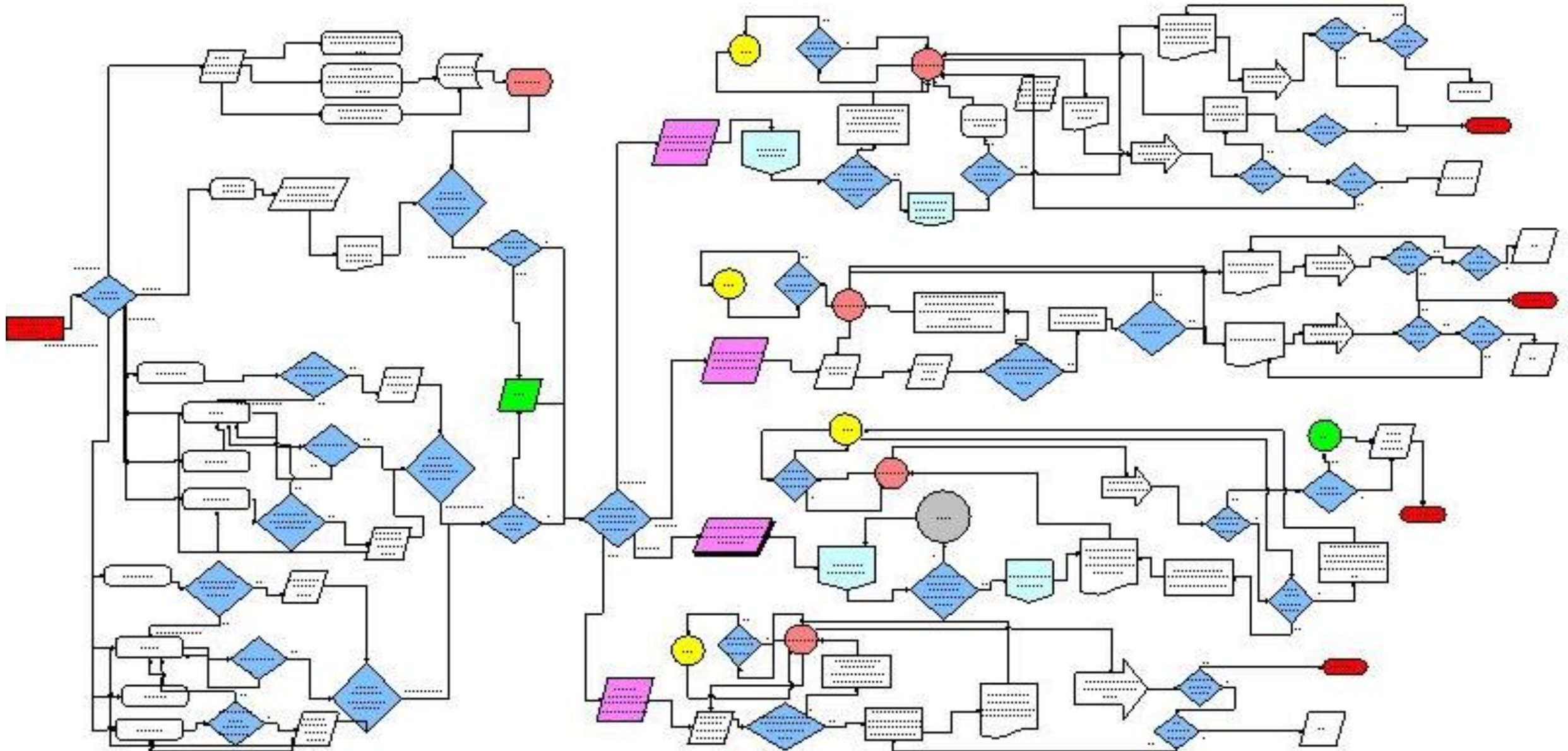
- Favorable value to cost comparison

- Multiple beneficiaries, purposes or basin-wide benefit

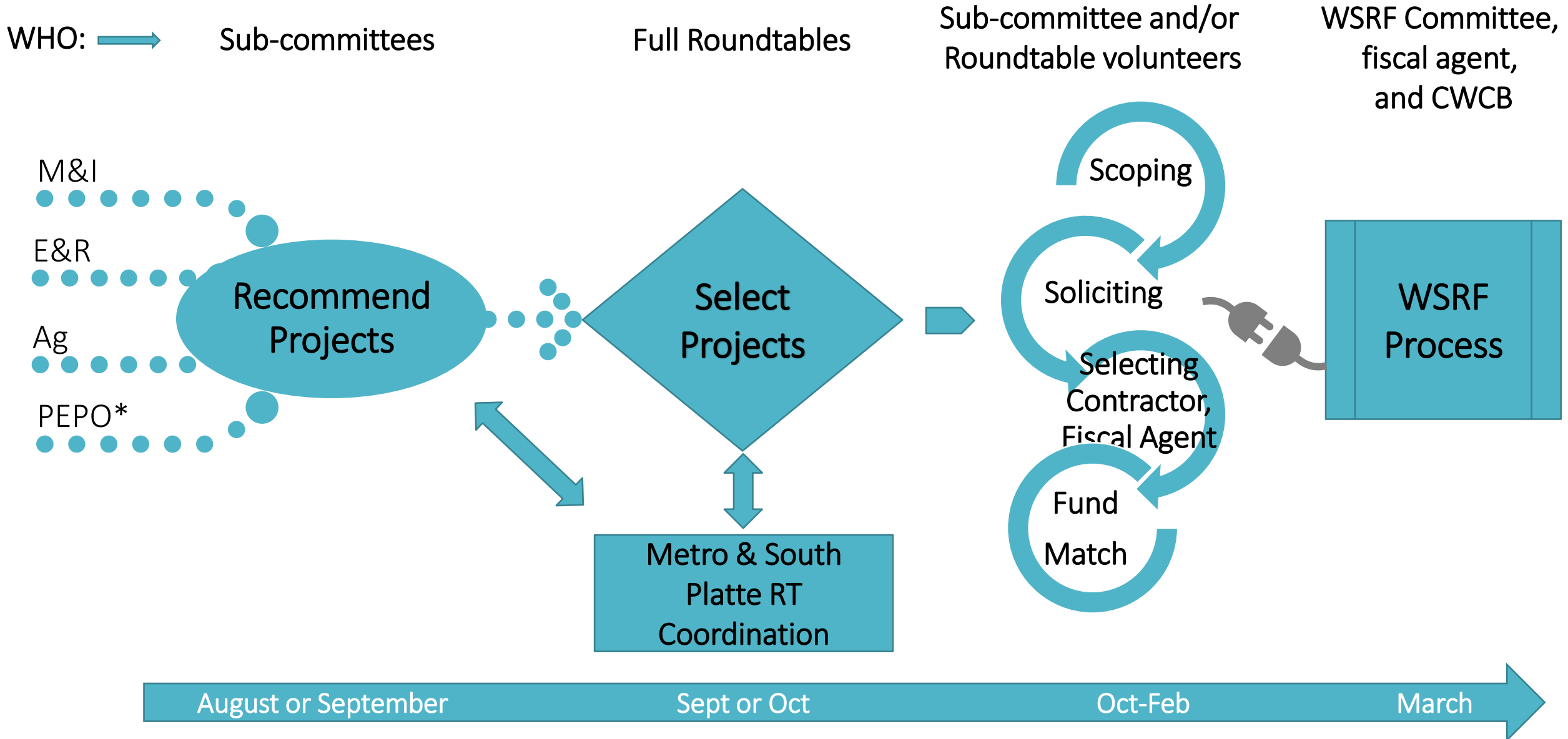
- Foster cooperation and minimize conflict

- Manage WSRF account to preserve use for external applicants

# Project Development and Funding Process



# Project Development and Funding Process



# Discussion