

Restoring Colorado's State Fish

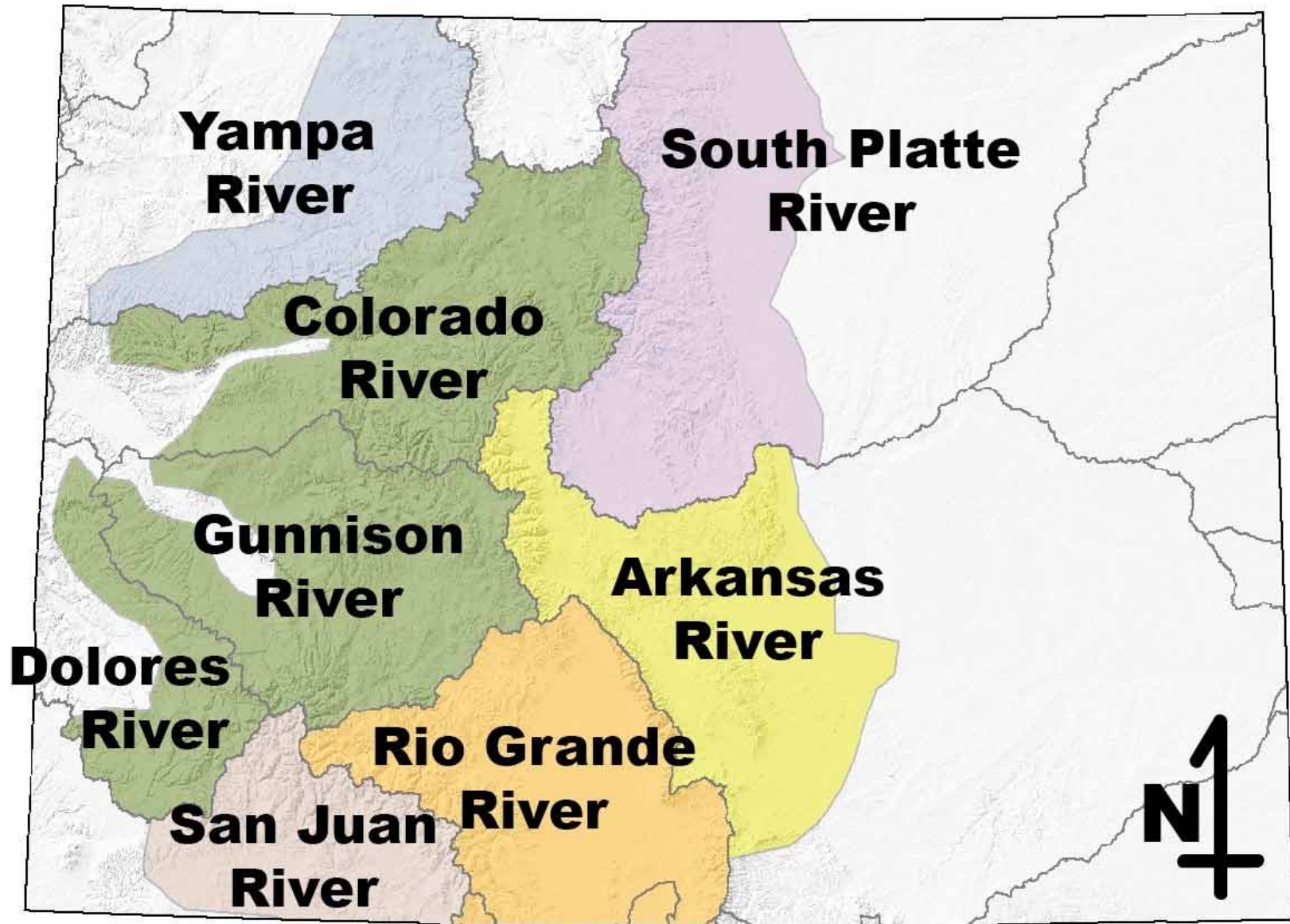
Greenback cutthroat trout



COLORADO



TROUT
UNLIMITED



Greenback cutthroat trout



- ❖ Only one confirmed self-sustaining population of extant trout matched what was in South Platte museum specimens
- ❖ Bear Creek, drainage on flanks of Pikes Peak - outside of Greenback's historic range



The New York Times

ENVIRONMENT Rare Cutthroat Trout Reduced to One Colorado River

POSTED BY [GEORGE PRENTICE](#) ON WED, SEP 26, 2012 AT 9:12 AM



Sign up Log in FEATURED: SendIt Video Traffic Failed To Death Photos

Study: Greenback cutthroat limited to 1 stream

9:41 PM, Sep 24, 2012 | 0 comments



Research finds home of true greenback cutthroat trout



By Dave Buchanan
Saturday, September 29, 2012

News: Science and Technology Study: Greenback cutthroat limited to 1 stream



Ed Engle: Bear Creek's 'unique' cutthroat trout population

By Ed Engle, For the Camera
Posted: 11/04/2012 04:00:00 PM MST



NEWS BITS A



Study Sheds Dramatic Light on Status of Greenback Cutthroat Trout



GREENBACK CUTTHROAT

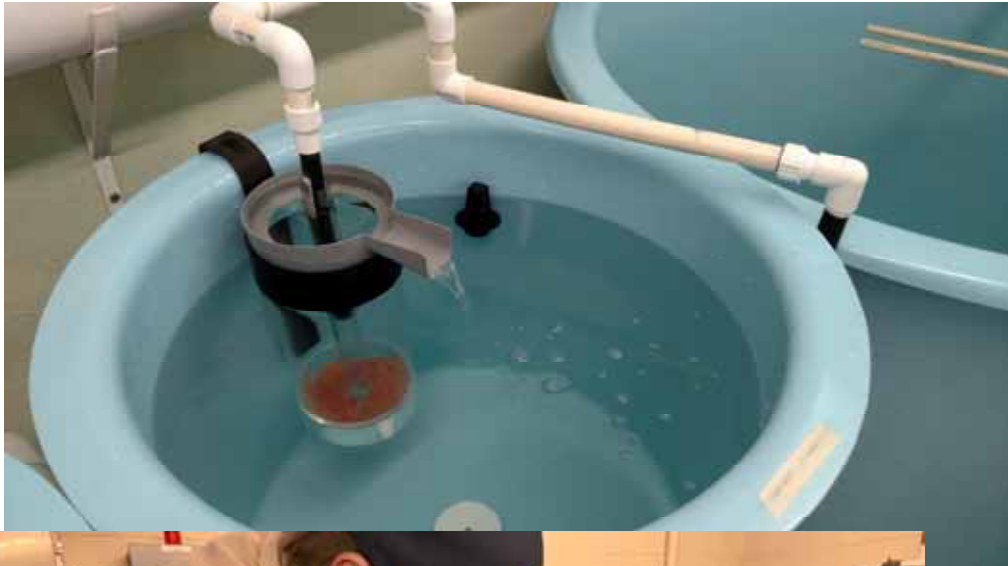
A detailed illustration of a Greenback Cutthroat Trout, shown in profile facing left. The fish has a light-colored body with dark spots and a prominent reddish-pink stripe along its side. The illustration is set against a light blue background.

James Miller © 2002

I'M BACK
COLORADO STATE FISH | BACK FROM EXTINCTION

Special thanks to: Alpine Anglers TU #453, Colorado Trout Unlimited and U.S. Fish and Wildlife Service, Designed and printed by Saber-Tooth Company www.a-sabertooth.com
Proceeds to benefit Greenback Trout restoration projects

Bringing Back the Natives - Broodstock



Bringing Back the Natives - Barriers



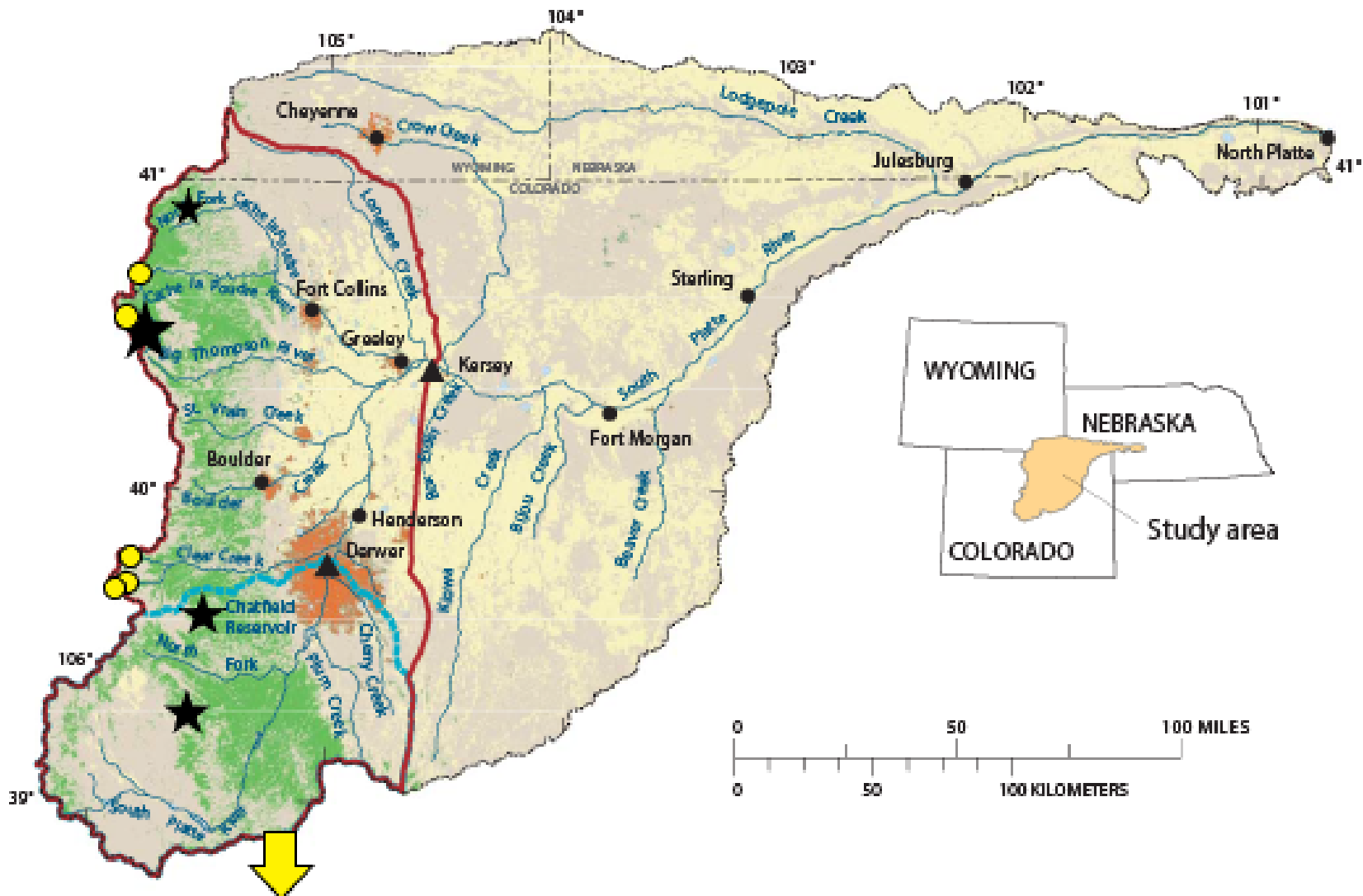
Bringing Back the Natives – Non-native fish removal



Bringing Back the Natives – Restocking



Greenback Restoration in the South Platte Basin



Base from the U.S. Geological Survey,
U.S. Census Bureau digital data, 1994 to 1997,
1:100,000 to 1:500,000 Albers Equal Area projection
Searched parallels 39°30'N and 40°30'N,
Central meridian 104°W
Latitude of projection origin 39°N

Greenback Restoration – Zimmerman Lake



Greenback Restoration – Clear Creek

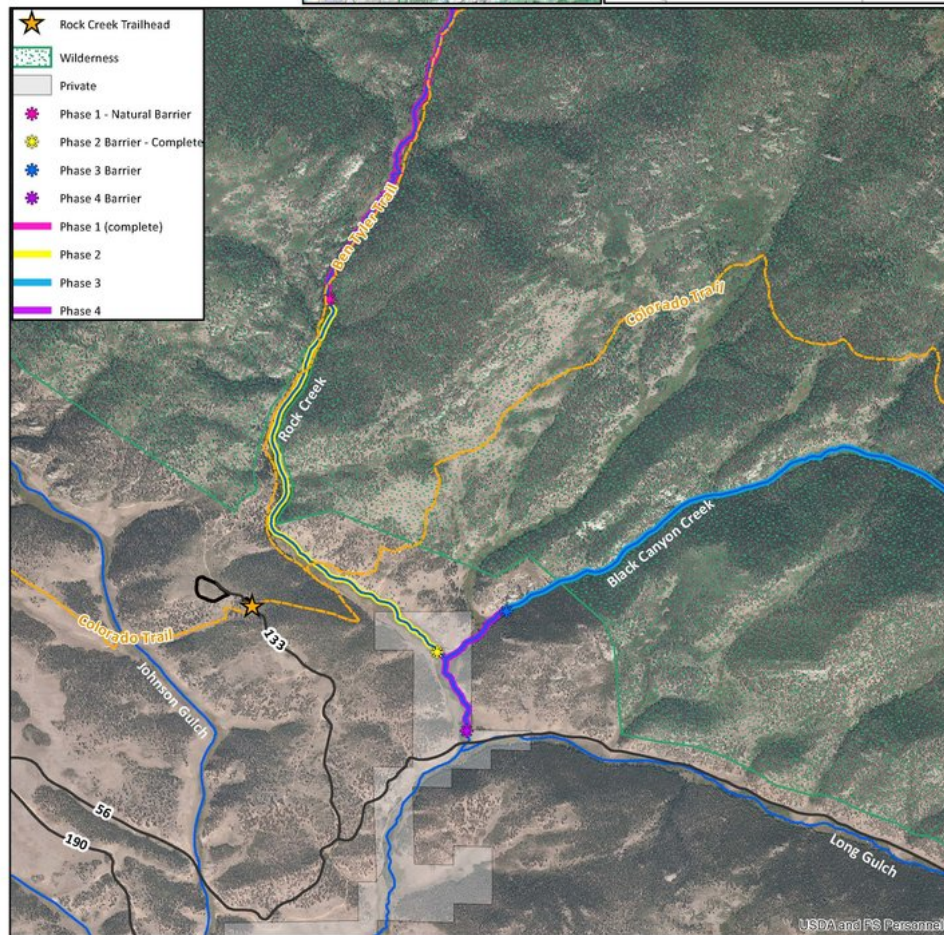
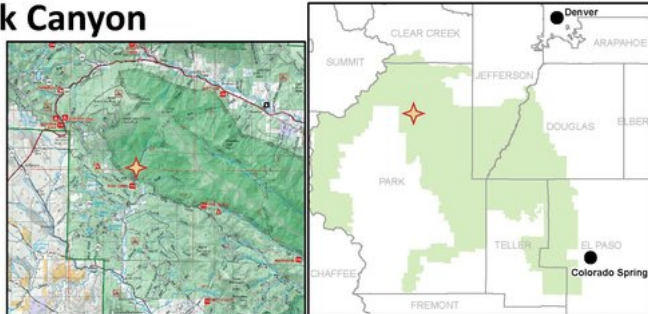
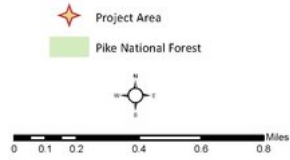


Greenback Restoration – Rock Creek



Rock Creek & Black Canyon

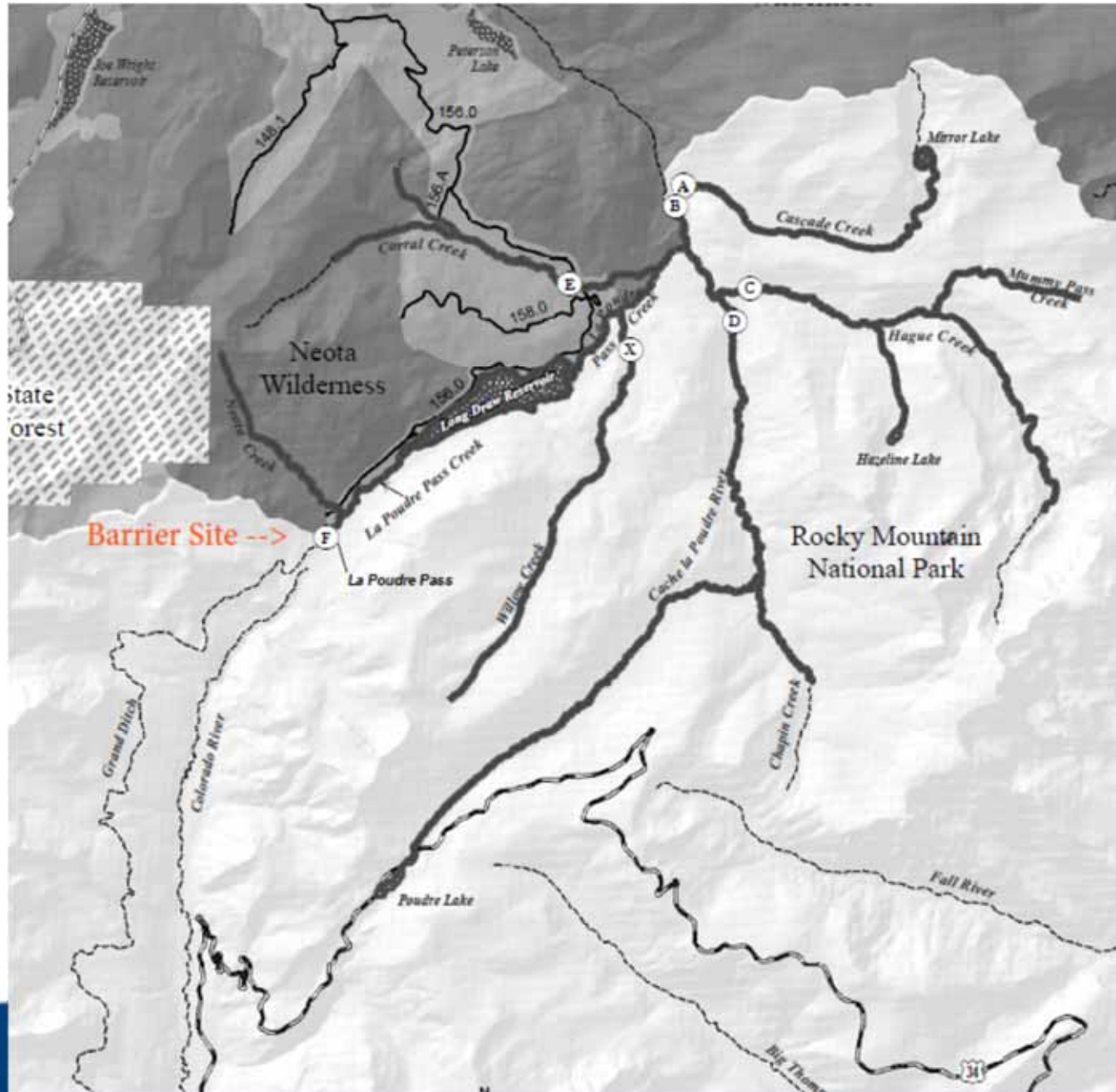
Greenback Restoration
South Park Ranger District
Pike National Forest
Park County, Colorado



Greenback Restoration – George & Cornelius



Greenback Restoration - Poudre Headwaters Project



Greenback Restoration - Poudre Headwaters Project



Greenback Restoration - Poudre Headwaters Project



Questions?

